

GEORGIA FLOOD MAP OVERVIEW

INTRODUCTION

The Federal Emergency Management Agency's (FEMA's) flood hazard maps are one of the essential tools for identifying flood risks and implementing beneficial flood mitigation in the United States. FEMA's nationwide flood hazard mapping effort, Risk MAP (Risk Mapping, Assessment and Planning) combines quality engineering with updated flood hazard data to help communities plan for and reduce losses due to flooding using the best possible, most current information.

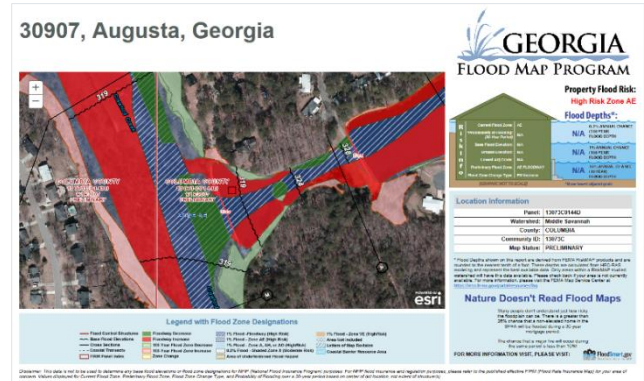
As part of a Cooperating Technical Partner (CTP) Agreement with FEMA, the Georgia Environmental Protection Division (EPD) under the Department of Natural Resources (DNR) is facilitating the implementation of FEMA's Risk MAP effort through its Georgia Flood MAP (Mapping, Assessment & Planning) program. This will provide direct management and support of all regulatory, engineering, and mapping activities within the State of Georgia. EPD is committed to developing a fully integrated floodplain management program that incorporates:

- Mapping needs assessments;
- Discovery/Project Scoping;
- Hydrologic and hydraulic modeling;
- Floodplain delineation;
- An internal quality control process for all aspects of the program;
- Flood Insurance Rate Map (FIRM) revisions;
- Post-preliminary FIRM processing; and
- Community Engagement and Risk Communication.

For its management plan to be effectively implemented, the State will need the full support and involvement of user communities. To ensure the full engagement of its partners, the State will commit a significant amount of resources to manage stakeholder expectations through up-front coordination, continual outreach, and customer service.

The EPD vision for Georgia Flood MAP is to provide a statewide program that not only delivers more accurate and complete flood hazard information for counties and municipalities within the state, but also provides

information and tools to assist communities in developing more comprehensive mitigation plans that will reduce losses from flooding.



HOW GEORGIA COMMUNITIES AND CITIZENS WILL BENEFIT FROM THIS PROGRAM

- The updated study data will provide more accurate information for Georgia communities to help with design decisions when rebuilding after flood disasters, building new structures and infrastructure, and when retrofitting existing structures.
- FIRMs will more accurately depict flood risk information.
- Users will be able to make more precise flood risk determinations.
- Builders and developers can use the updated map data to determine where and how to build structures more safely and how high to build to reduce the risk of flood damage.
- Real estate agents will be better able to inform clients of the risk factors that may affect the property they are buying or selling as well as any flood insurance requirements.
- Insurance agents will know their clients' current flood risk and can provide more informed recommendations regarding flood insurance coverage options.
- Residents and business owners will understand their current flood risk and be able to make better decisions about insuring and protecting their property against floods.

GEORGIA FLOOD MAP OVERVIEW

- Community officials will be able to develop a more comprehensive approach to disaster mitigation planning, economic development, and emergency response, resulting in a more resilient community in which to live and work.

For more information, contact:

Joe Martinenza P.E.

NFIP State Coordinator

Program Manager-Floodplain Unit

Georgia Department of Natural Resources

Environmental Protection Division

Watershed Protection Branch

2 Martin Luther King Jr. Drive, Suite 1152 East

Atlanta, Georgia 30334

470-938-3355

Joseph.Martinenza@dnr.ga.gov