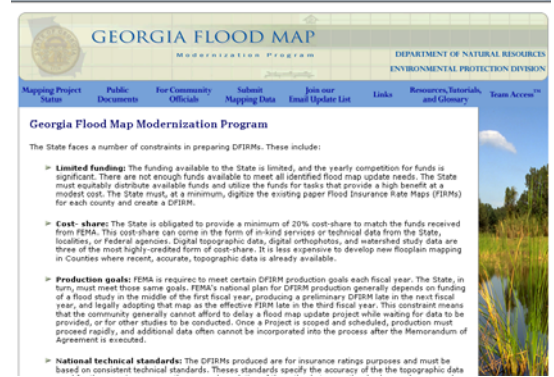


Introduction

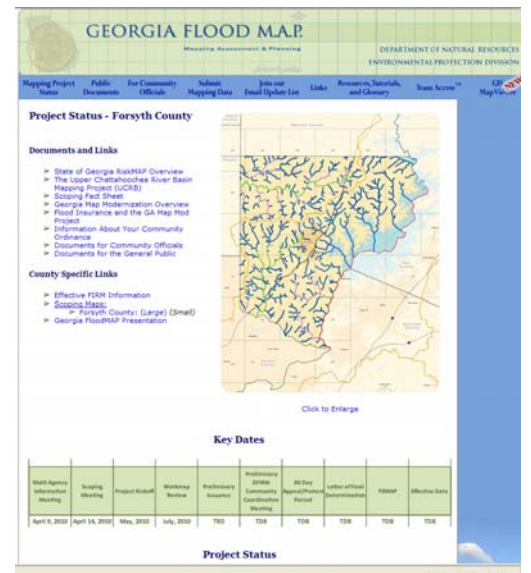
As part of the Georgia Flood Mapping, Assessment, and Planning (M.A.P.) Program, our website has been updated to help disseminate information about all aspects of the program to mapping partners and the public more effectively. The website can be found at www.georgiadfirm.com and contains background information, status reports, technical data, outreach materials, and valuable links to associated information.



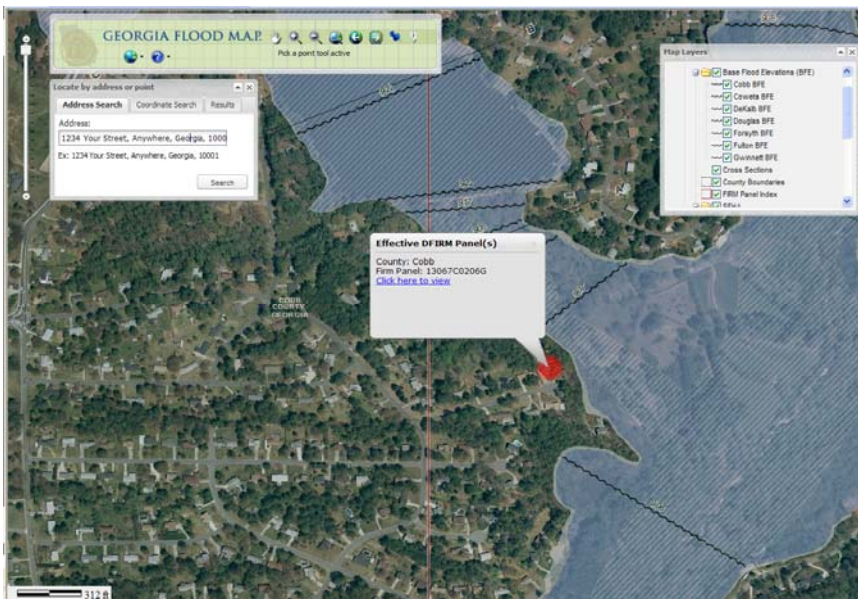
New Mapping Project Status Pages

As county mapping projects meet certain milestones, users will be able to see the associated information for their county on the county-specific project status pages. Project information such as specialized outreach documents, county-specific web links, key dates, project status indicator and project scope of work table is available on each county page for the Upper Chattahoochee River Basin Project and future GA DNR-EPD flood map projects.

- ❖ Project Status Pages are updated weekly
- ❖ View and/or print Project Scope Maps
- ❖ Keep up-to-date on important project meeting dates
- ❖ Print County-Specific Project Outreach documents for use at meetings or for availability for office visitors



New GA Flood M.A.P. Viewer



A new addition to the GeorgiaDFIRM.com website is the Flood M.A.P. Viewer which has been designed to provide users with easy access to updated flood risk information as it is developed as well as provide GA communities with a portal for flood risk assessment information. Floodplain Administrators can easily identify flood risk for individual properties or provide elected officials and emergency planners with estimated economic loss information based on the established flood risk for your community.

