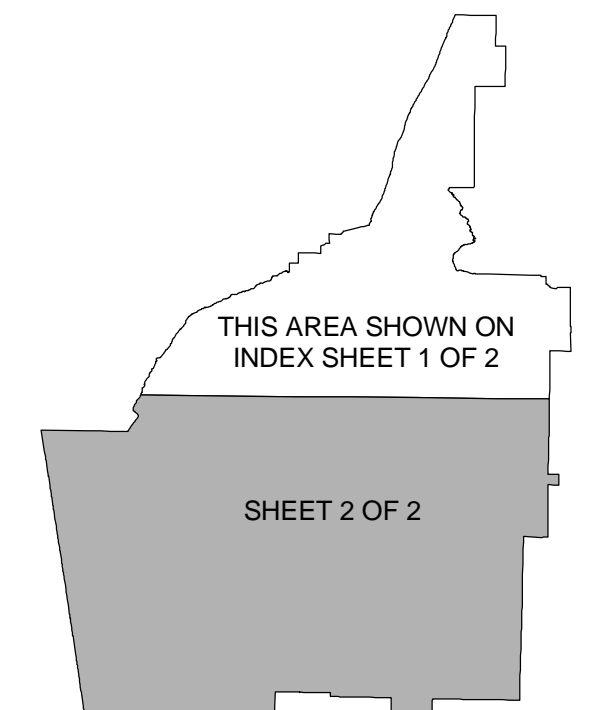


NOTE TO USERS

FEMA maintains information about map features, such as street locations and names, in or near designated flood hazard areas. Requests to revise information in or near designated flood hazard areas may be provided to FEMA during the community review period, at the final Consultation Coordination Officer's meeting, or during the statutory 90-day appeal period. Approved requests for changes will be shown on the final printed FIRM.

FLOYD COUNTY, GA
INDEX LOCATOR DIAGRAM



See Sheet 1 of 2 for Map Repository and Listings of Communities

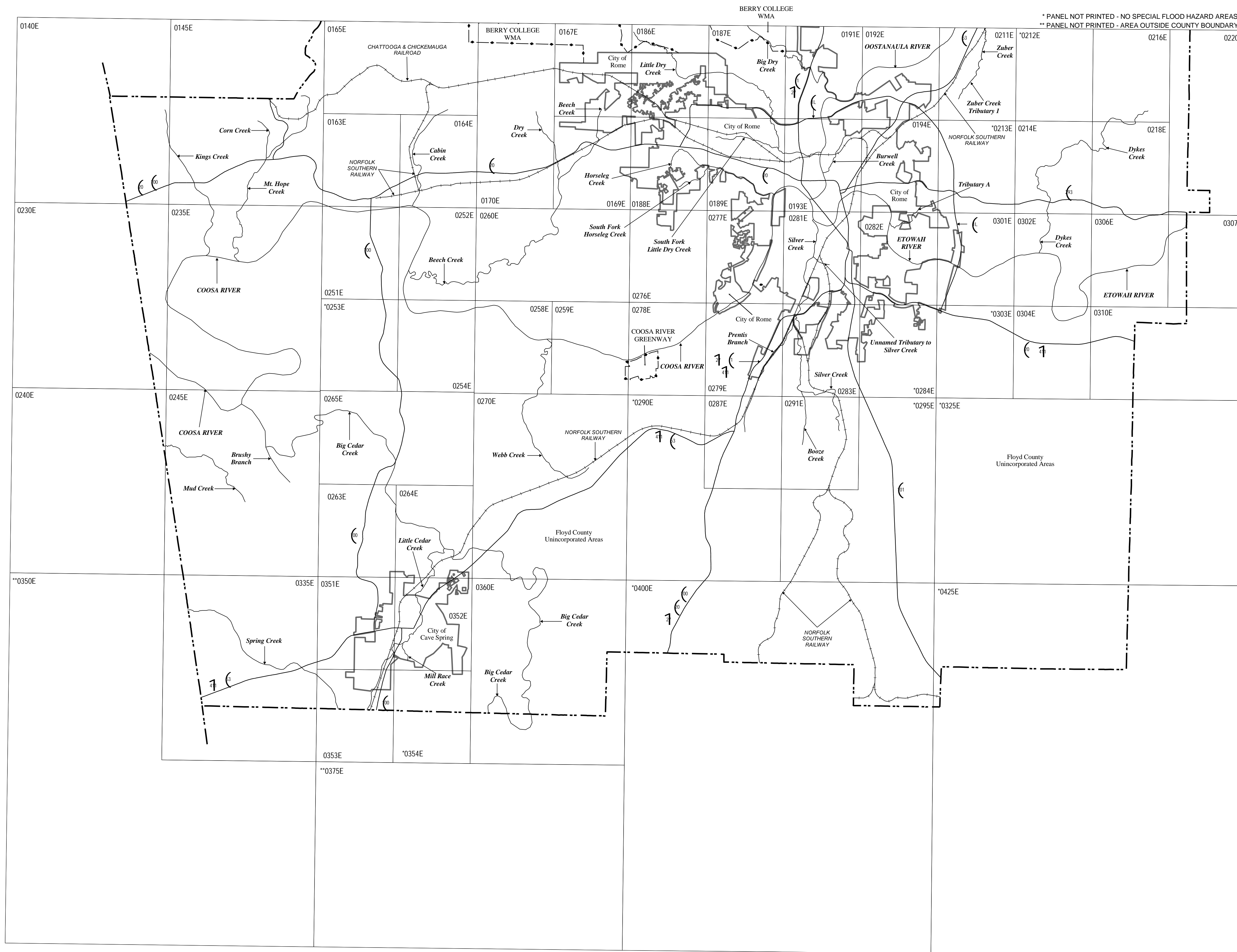
NOTE TO USER

Future revisions to this FIRM Index will only be issued to communities that are located on FIRM panels being revised. This FIRM Index therefore remains valid for FIRM panels dated [date] or earlier. Please refer to the "MOST RECENT FIRM PANEL DATE" column in the Listing of Communities table to determine the most recent FIRM Index date for each community.

MAP DATES

This FIRM Index displays the map date for each FIRM panel at the time that this index was printed. Because this Index may not be distributed to unaffected communities in subsequent revisions, users may determine the current map date for each FIRM panel by visiting the FEMA Map Service Center website at <http://web1.msc.fema.gov>, or by calling the Map Service Center at 1-800-358-9616.

Communities annexing land on adjacent FIRM panels must obtain a current copy of the adjacent panel as well as the current FIRM Index. These may be ordered directly from the Map Service Center at the number listed above.



MAP INDEX

FIRM
FLOOD INSURANCE RATE MAP
**FLOYD COUNTY,
GEORGIA**
AND INCORPORATED AREAS
(SEE LISTING OF COMMUNITIES TABLE)

MAP INDEX
SHEET 2 OF 2

PANELS PRINTED: 140, 145, 163, 164, 165, 167, 169, 170, 186, 187, 188, 189, 191, 192, 193, 194, 211, 214, 216, 218, 220, 230, 235, 240, 245, 251, 252, 254, 258, 259, 260, 263, 264, 265, 270, 276, 277, 278, 279, 281, 282, 283, 287, 291, 301, 302, 304, 306, 307, 310, 335, 351, 352, 353, 360

(SEE SHEET 1 FOR ADDITIONAL PANELS PRINTED)

PRELIMINARY

MAP NUMBER
13115CIND2A
EFFECTIVE DATE

Federal Emergency Management Agency

